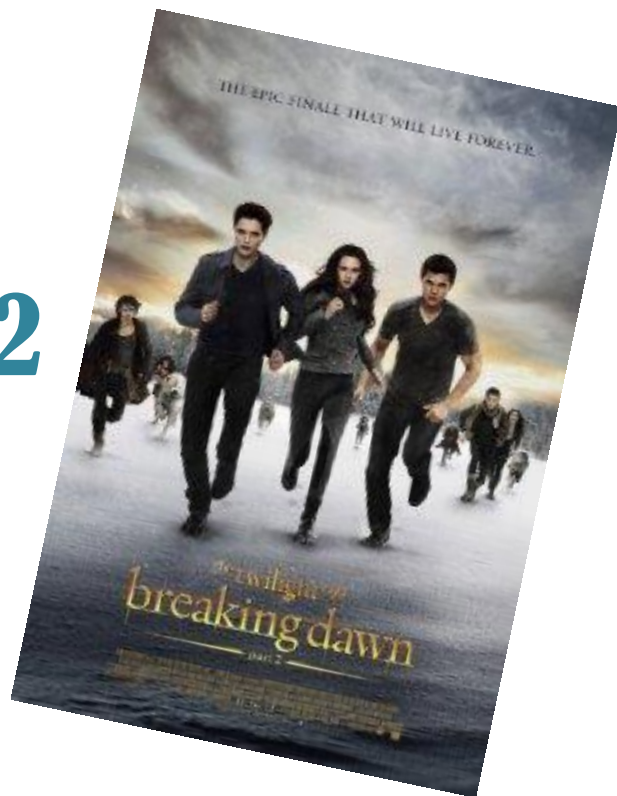


be the first to see...

The Twilight Saga: Breaking Dawn Part 2

Premier Night to support
Peak Boosters

Thursday, November 15, 2012



6:30pm
(arrive by 6pm)

Meadows Stadium 12
9355 Park Meadows Drive

Door
Prizes

★ ★ ★ ★ ★ Ticket Order Form ★ ★ ★ ★ ★

Tickets will be available for pick up at the front desk in November or at 5:30pm at the PEAK table at the theater on November 15th

Name: _____

Phone: _____ Email: _____

	Price	Quantity	Total
Premier Breaking Dawn Tickets	\$20		

Please make checks payable to Peak boosters